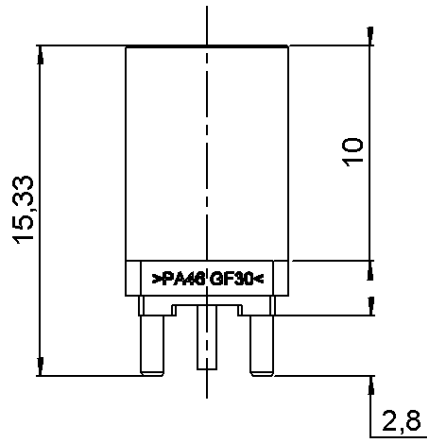


STRAIGHT PCB RECEPTACLE

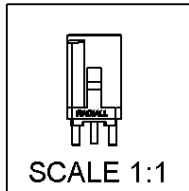
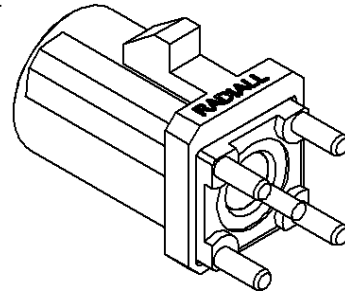
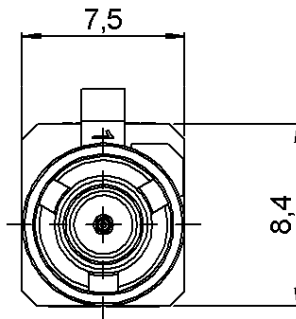
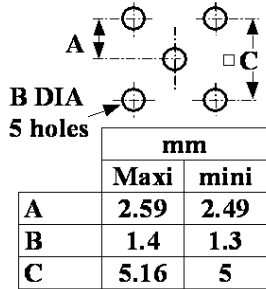
R197.150.E07

Series : **SMB**
CARLOCK

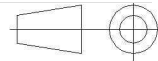


CODING E

PANEL CUT OUT



All dimensions are in mm.



| COMPONENTS | MATERIALS | PLATING (µm) |
|----------------|-----------------------------------|-----------------------------------|
| BODY | BRASS | TIN 3 OVER NICKEL 2 GOLD 0.5 OVER |
| CENTER CONTACT | BRASS | NICKEL 2 |
| OUTER CONTACT | - | - |
| INSULATOR | PTFE | - |
| GASKET | - | - |
| OTHERS PARTS | PA 46 GF30 (STANYL TS200F6) Color | - |
| - | GREEN(RAL6002) | - |
| - | - | - |
| - | - | - |

Issue : 0648 A

In the effort to improve our products, we reserve the right to make changes judged to be necessary.



STRAIGHT PCB RECEPTACLE

R197.150.E07

Series : **SMB**
CARLOCK

PACKAGING

SPECIFICATION

QS9000 A 00

| Standard | Unit | Other |
|------------|-------------------|-------------------|
| 100 | 'W' option | Contact us |

ELECTRICAL CHARACTERISTICS

ENVIRONMENTAL

| | | |
|---------------------------------|----------------------|-------------------------|
| Impedance | 50 | Ω |
| Frequency | 0-4 | GHz |
| VSWR | 1.05 + 0,0080 | x F(GHz) Maxi |
| Insertion loss | 0.03* | $\sqrt{F(GHz)}$ dB Maxi |
| RF leakage | - (57) | - F(GHz)) dB Maxi |
| Voltage rating | 500 | Veff Maxi |
| Dielectric withstanding voltage | 1000 | Veff mini |
| Insulation resistance | 1000 | M Ω mini |

| | | |
|-----------------------|-----------------|--------------|
| Operating temperature | -40/+110 | $^{\circ}$ C |
| Hermetic seal | NA | Atm.cm3/s |
| Panel leakage | NA | |

OTHER CHARACTERISTICS

Assembly instruction

Others :

*COAX TRANSMISSION LINE ONLY

MECHANICAL CHARACTERISTICS

| | | |
|--------------------------------|---------------|-------------|
| Center contact retention | | |
| Axial force (before soldering) | 5 | N mini |
| Axial force (after soldering) | 10 | N mini |
| Torque | NA | N.cm mini |
| Recommended torque | | |
| Mating | NA | N.cm |
| Panel nut | NA | N.cm |
| Mating life | 100 | Cycles mini |
| Weight | 1,2700 | g |

Issue : 0648 A

In the effort to improve our products, we reserve the right to make changes judged to be necessary.

